

KIT # VER - 38
for CENTRE PARTING
landing door
Made by Westinghouse

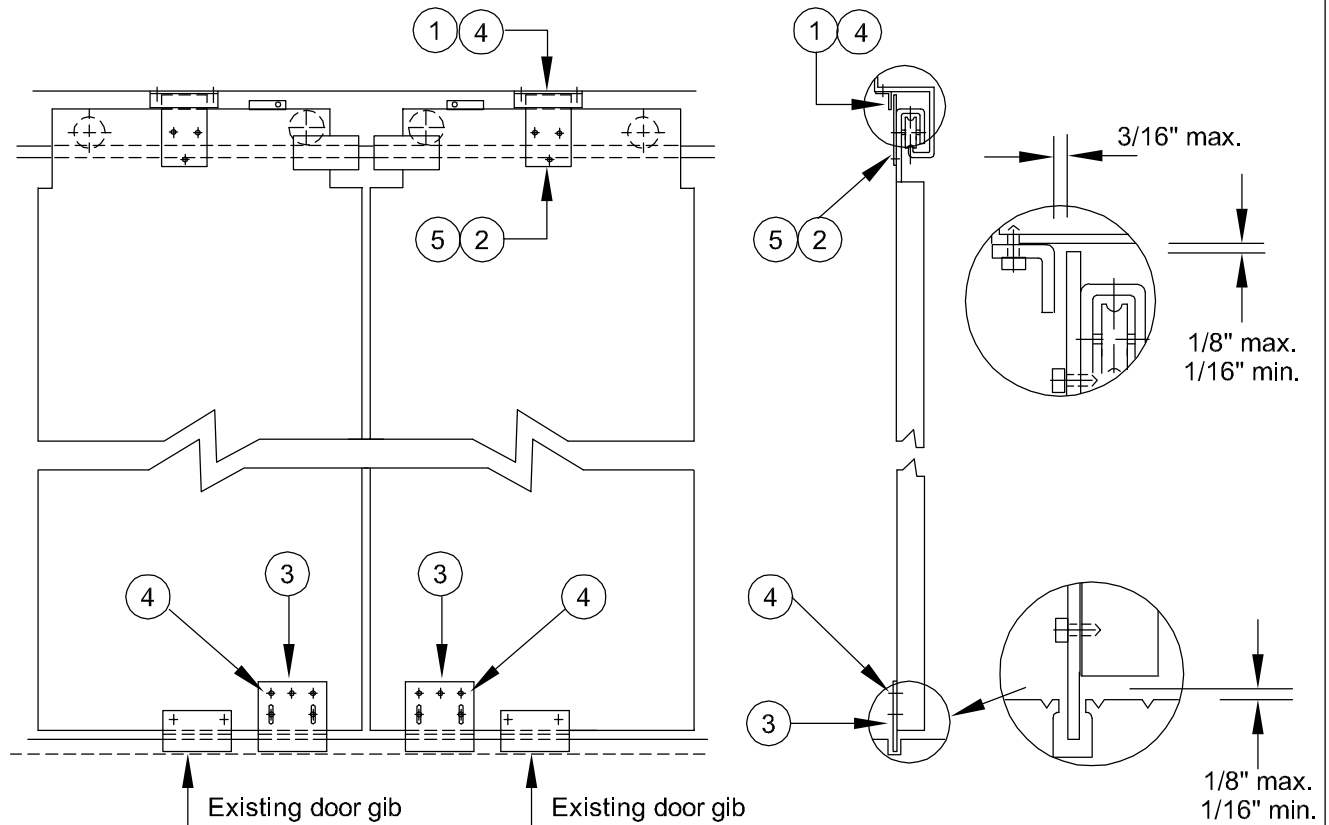
Item	Part No.	Description	Q'ty req'd
1	VR - 7	Top Retainer - Angle	2
2	VR - 10 E	Top Retainer - Flat	2
2	VER - B - 2	Bottom Retainer	2
4	TEKS - 2	Screw 10 - 24 x 3/4 TEKS - 2 or equiv. hexagon washer hd, self tap, self drill	14
5	TEKS - 2	Screw 1/4 - 20 x 3/4 TEKS - 2 or equiv. hexagon washer hd, self tap, self drill	6

Tools Req'd : Electric screwdriver with clutch driven 5/16 hex. socket.
Clutch set at 30 - 40 inch- pounds torque.
5/16 & 1/2 wrench for adjustment.

INSTALLATION :

With door closed position top retainers (Item 1 and 2) according to dimensions on the drawing.
Install retainers using supplied hardware, check that retainers will not scrape the door hanger
when the door is opening or closing.

With door closed position bottom retainer (Item 3) as shown on the drawing.
Install retainer using one screw in the slotted hole, check that retainer will not scrape the sill
when door is opening or closing.
Readjust when necessary, install remaining screws.



DOOR SAFETY RETAINER KIT FOR FIELD MOUNTING TO
CENTRE PARTING LANDING DOOR.

